



Size Chart

All Sizes Are In Inches

Men's Waist Jacket / 48" Coat

SIZE	XXS	XS	S	M	L	XL	2XL	3XL	4XL	5XL
FITS CHEST SIZE	28 - 30	32 - 34	36 - 38	40 - 42	44 - 46	48 - 50	52 - 54	56 - 58	60 - 62	64 - 66
ACTUAL CHEST SIZE	38	42	46	50	54	58	62	66	70	74
SLEEVE LENGTH	32.0	32.5	33.0	33.5	34.0	34.5	35.0	35.5	36.0	36.5
JACKET LENGTH	29	29	29	29	29	29	29	29	29	29



Size Chart

All Sizes Are In Inches

Men's Waist Pant and Bib Style Trouser

SIZE	XXS	XS	S	M	L	XL	2XL	3XL	4XL	5XL
FITS WAIST SIZE	24 - 26	28 - 30	32 - 34	36 - 38	40 - 42	44 - 46	48 - 50	52 - 54	56 - 58	60 - 62
ACTUAL OVERALL WAIST	34	38	42	46	50	54	58	62	66	70
INSEAM LENGTH	29	29	29	29	29	29	29	29	29	29

NASCO

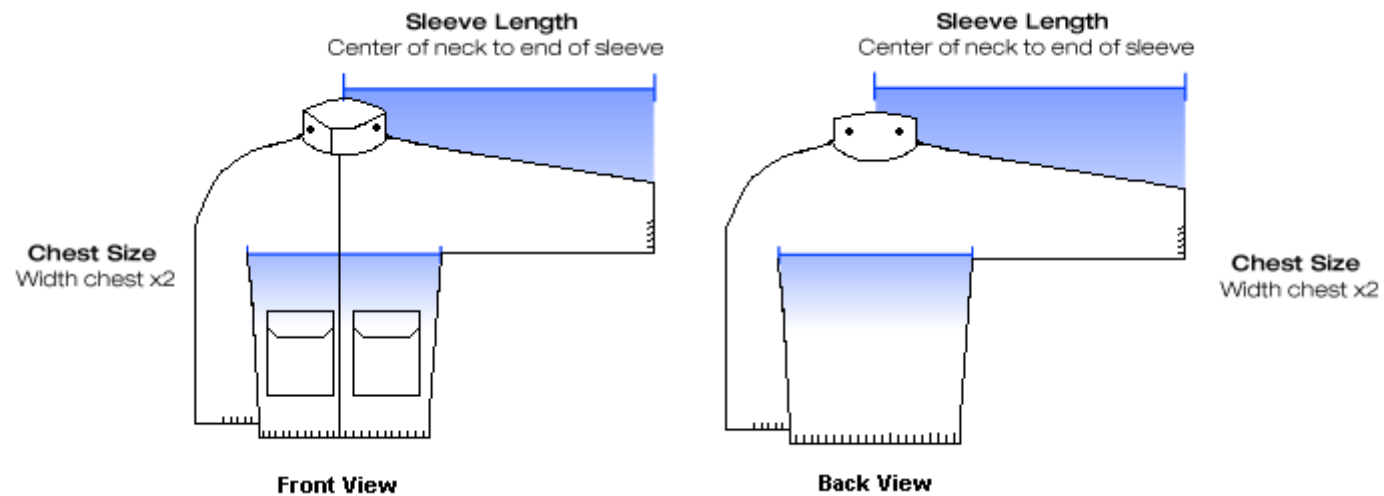
Size Chart

All sizes are available in Long and Tall.

- Longs have 2 inches added to the Jacket length and sleeves.
- Talls have 4 inches added to the Jacket length and sleeves.

NASCO outerwear patterns are digitally mastered and cut ensuring that you get the right size garment every time.

HOW TO MEASURE WAIST JACKET AND COAT



NASCO

Size Chart

All sizes are available in Long and Tall.

- Longs have 2 inches added to the Waist Pant and Bib Trouser inseam.
- Talls have 4 inches added to the Waist Pant and Bib Trouser inseam.

NASCO outerwear patterns are digitally mastered and cut ensuring that you get the right size garment every time.

HOW TO MEASURE WAIST PANT AND BIB STYLE TROUSER

