

DRIFIRE® HORIZON FR WORK SHIRT



DRIFIRE®

Available in Two Options

DRIFIRE® HORIZON FR WORK SHIRT

SHR-LT01-GR (Grey) | SHR-LT01-LB (Lt. Blue)
SHR-LT01-NB (Navy) | SHR-LT01-TN (Tan)

DRIFIRE® HORIZON FR VENTED WORK SHIRT

SHR-LTV-GR (Grey) | SHR-LTV-LB (Lt. Blue)
SHR-LTV-NB (Navy) | SHR-LTV-TN (Tan)

The DRIFIRE® Horizon FR Work Shirt line is ultra-lightweight and delivers trusted CAT 2, 12 cal protection, durable construction, and all-day comfort. The difference is simple: the vented work shirt adds a back vent designed to help release heat and keep the wearer cooler in hotter environments.

- **CLASSIC STYLE**

Ultra-lightweight FR protection and durable everyday performance for the jobsite

- **VENTED BACK DESIGN**

The same proven classic shirt, enhanced with back venting for improved airflow and comfort in heat-stress conditions

- **COMFORT**

Ultra-lightweight fabric and fit built for mobility and all-day wear

- **DURABILITY**

Built for demanding worksites with durable construction and reinforced high-wear details

- **FUNCTIONAL**

Choose classic for dependable everyday wear, or vented for added cooling when things heat up

ARC RATING: 12 cal/cm² | CAT 2

COMPLIANT WITH: ASTM F1506, CSA Z462, NFPA® 70E, NFPA® 2112, OSHA 1910.269

MATERIAL: 5.2 oz. GlenGuard Latitude

SIZES: SM-3X, RG | MD-3X, TL



SHR-LT01-NB (Classic)

SHR-LTV-NB (Vented)

VENTED BACK DESIGN



Designed to help release heat and improve airflow while you work.

ADDITIONAL COLOR OPTIONS



SHR-LT01-GR (Classic)

SHR-LTV-GR (Vented)



SHR-LT01-LB (Classic)

SHR-LTV-LB (Vented)



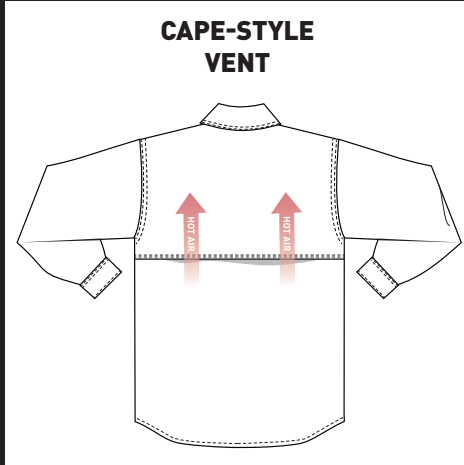
SHR-LT01-TN (Classic)

SHR-LTV-TN (Vented)

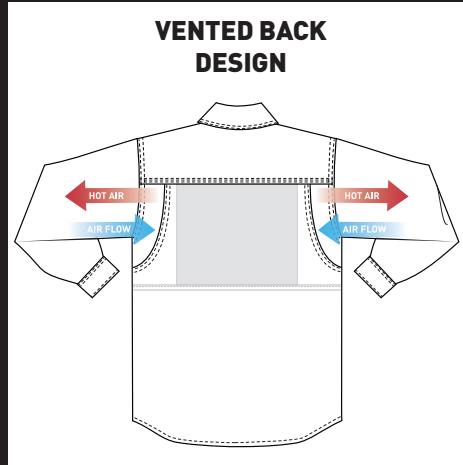
DRIFIRE® HORIZON FR VENTED WORK SHIRT



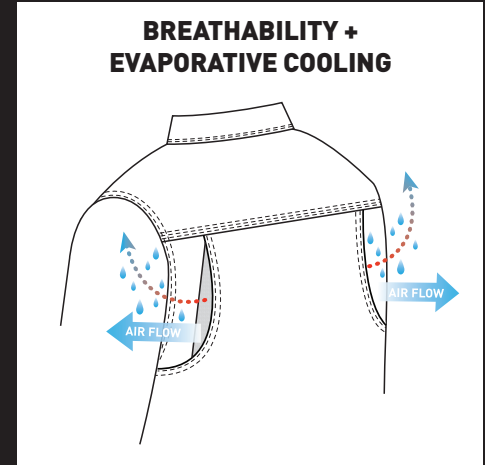
FEATURES



Heat naturally rises, making conventional cape-style vents fall short of optimal air-flow



Back vent design actively pumps hot air out and allows cool air in while you work



Internal FR mesh panel wicks away sweat & stretches, allowing for optimal mobility

HOW TO MEASURE + MEASUREMENT CHART

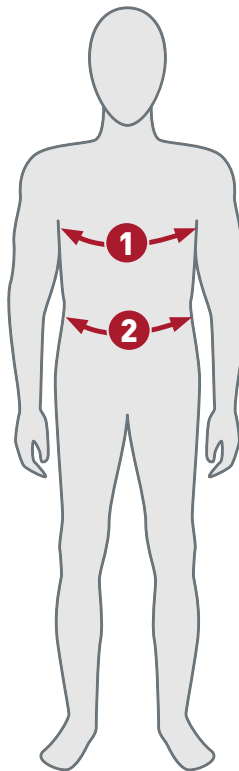
1 CHEST

Stand up straight with your arms relaxed at your sides. Measure around the fullest part of your chest, under your arms and across your shoulder blades, ensuring the tape is level.

2 WAIST

Measure around your natural waist, where your waist bends side to side.
NOTE: This may not be the smallest point.

NOTE: Measurements are body measurements to help determine what size garment a person should order. For best results, measure over fitted undergarments. If your measurement falls between sizes, it is recommended that the larger size be purchased.



MEASUREMENT CHART		
RECOMMENDED SIZE	BODY MEASUREMENTS	
	CHEST (in)	WAIST (in)
SM	34-37	28-31
MD	38-41	32-35
LG	42-45	36-39
XL	46-49	40-43
2X	50-53	44-47
3X	54-57	48-51

- Tall sizes are 2" longer than regular sizes
- Tall alterations have a 1½" longer sleeve length than a regular.
- Short alterations have a 1½" shorter sleeve length than a regular